

Plants- Year 3

Key Learning

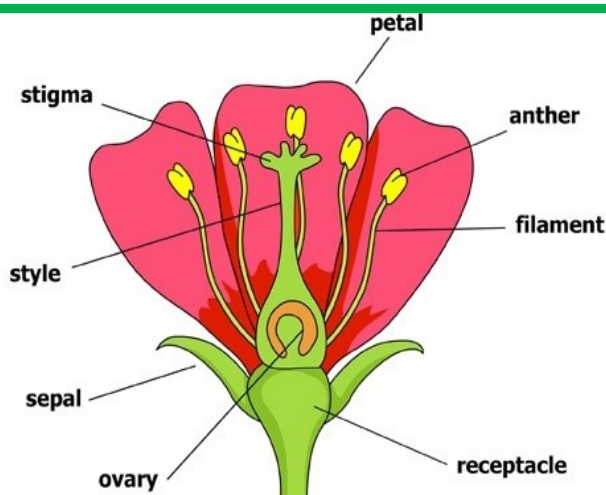
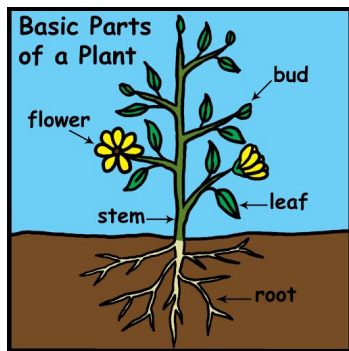
-Identify and describe the functions of different parts of flowering plants: roots, stem, leaves and flowers.

- Explore the requirements of plants for life and growth (air, light, water, nutrients from soil, and room to grow) and how they vary from plant to plant.

- Investigate the way in which water is transported within plants.

Functions of the different parts of flowering plants.

- The petals on a flower are usually bright - this is to attract bees and other insects so that they can collect pollen to make seeds.
- The seeds are then able to grow to make new plants. This is called germination.
- Leaves use carbon dioxide and sunlight to make food for the plant.
- The stem carries water and other nutrients from the roots to the rest of the plant. Leaves use this water to make food.



Key Vocabulary

Absorb-soak up or take in

Anther- the part of a stamen that produces and releases the pollen

Branches-parts that grow out from the tree trunk and have leaves, flowers, or fruit growing on them

Bulb - a root shaped like an onion that grows into a flower or plant

Dispersed- scattered, separated, or spread through a large area

Dissect-to carefully cut something up in order to examine it scientifically

Fertilisation- in plants, where pollen meets the ovule to form a seed

Flower- the part of a plant which is often brightly coloured and grows at the end of a stem

Germination- if a seed germinates or if it is germinated, it starts to grow

Leaf / leaves- the parts of a tree or plant that are flat, thin, and usually green

Nutrients- substances that help plants and animals to grow

Ovule- a small egg shaped thin coloured or white parts which form part of the flower

Plant- a living thing that grows in the earth and has a stem, leaves, and roots

Pollen-a fine powder produced by flowers. It fertilises other flowers of the same species so that they produce seeds

Roots- the parts of a plant that grow under the ground seed the small, hard part from which a new plant grows

Stem- the thin, upright part of a plant on which the flowers and leaves grow

Stigma- the top of the centre part of a flower which takes in pollen

Temperature- a measure of how hot or cold something is

Transported- taking something from one place to another

Tree- a tall plant that has a hard trunk, branches, and leaves

Trunk- the large main stem from which the branches grow